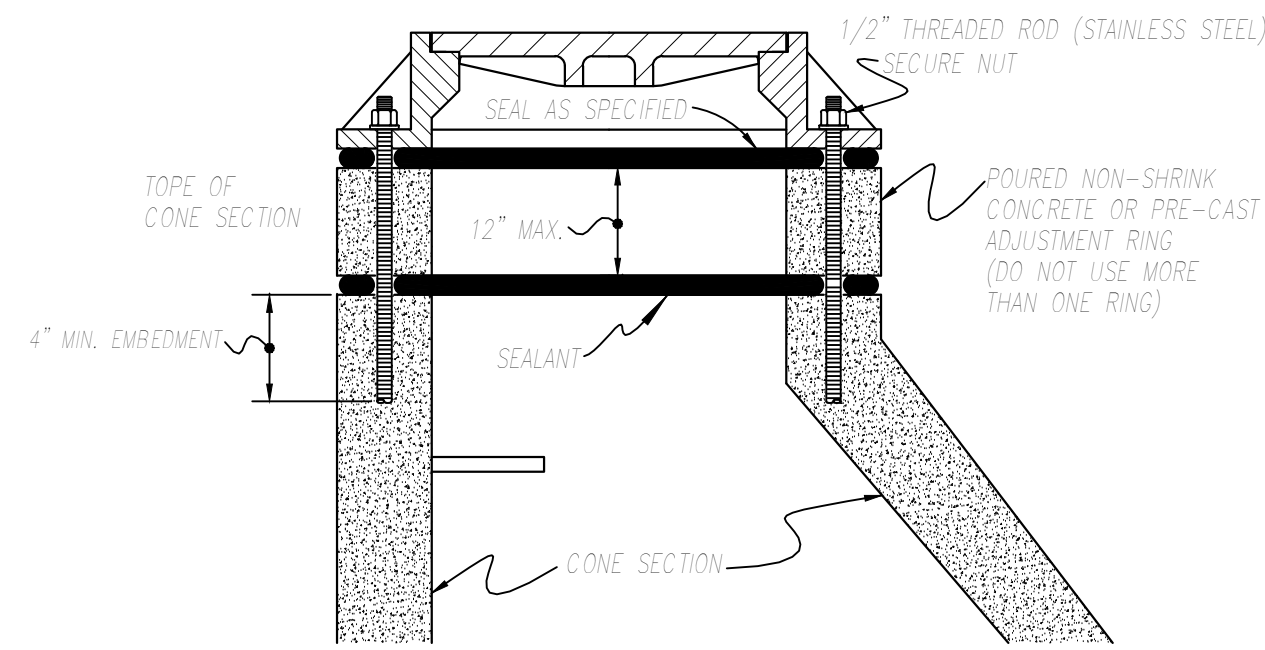


NOTE: INSTALL SEALING COMPOUND IN ALL JOINTS TO INCLUDE BENEATH FRAME.

DETAIL - GRADE RINGS

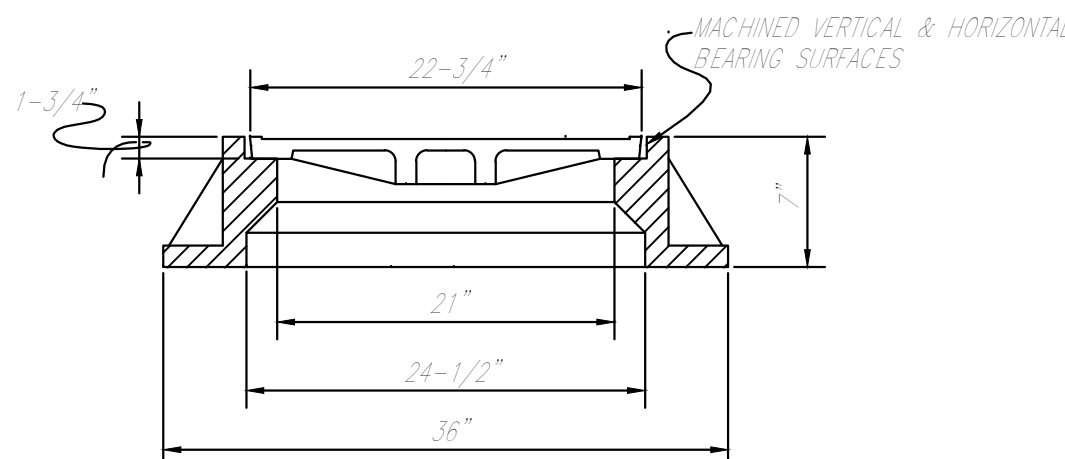
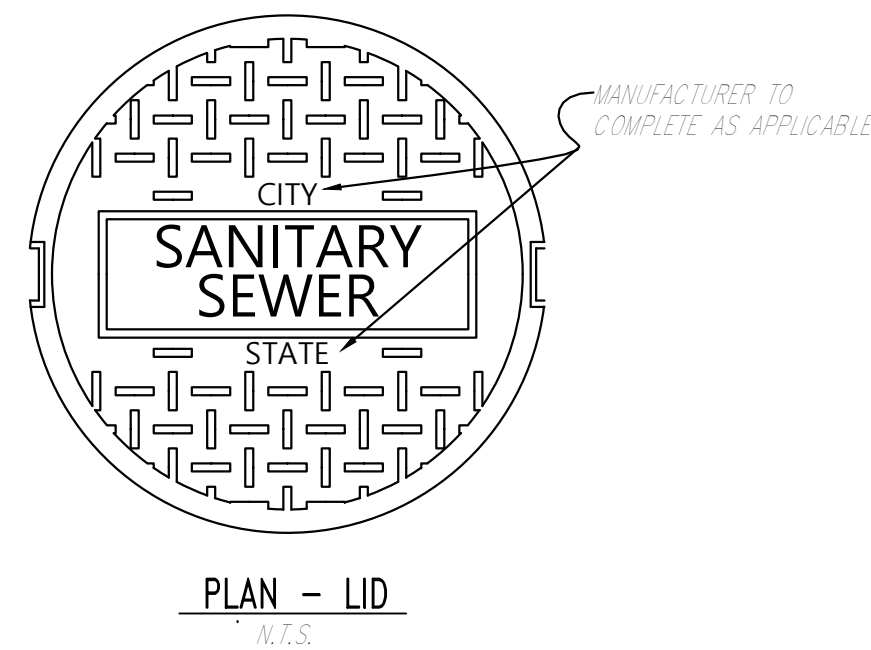
N.T.S. (GC5-05)



DETAIL: SANITARY SEWER  
INSTALLATION DETAIL FOR  
ALL FRAMES AND COVERS

N.T.S.

NOTES:  
MANHOLE COVER SHALL BE JR HOE MC-350.  
ALL STEEL ASTM A-48 W/ MACHINED SEATING EDGES.



SECTION - MANHOLE & LID

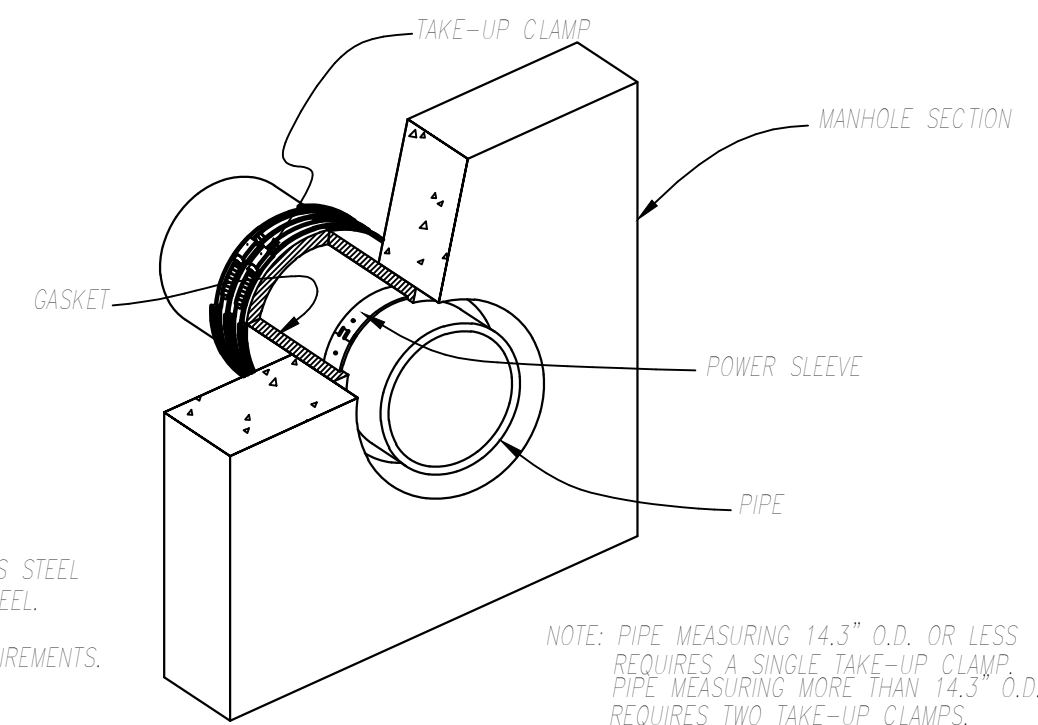
N.T.S. (GC5-06)

GASKET: THICKNESS OF GASKET MATERIAL .375  
TENSILE STRENGTH OF RUBBER 1900 PSI  
ELONGATION OF RUBBER 450% - 550%  
DIAMETER OF RUBBER 42 +5  
ALL RUBBER MEETS ASTM C-923 REQUIREMENTS.

POWER EXPANSION SLEEVE: 1.5" X .120" TYPE 304 STAINLESS STEEL  
TENSILE STRENGTH OF STEEL 85,000 PSI  
YIELD STRENGTH OF STEEL 35,000 PSI  
POWER EXPANSION SLEEVE STAINLESS STEEL MEETS ALL REQUIREMENTS OF ASTM C-923

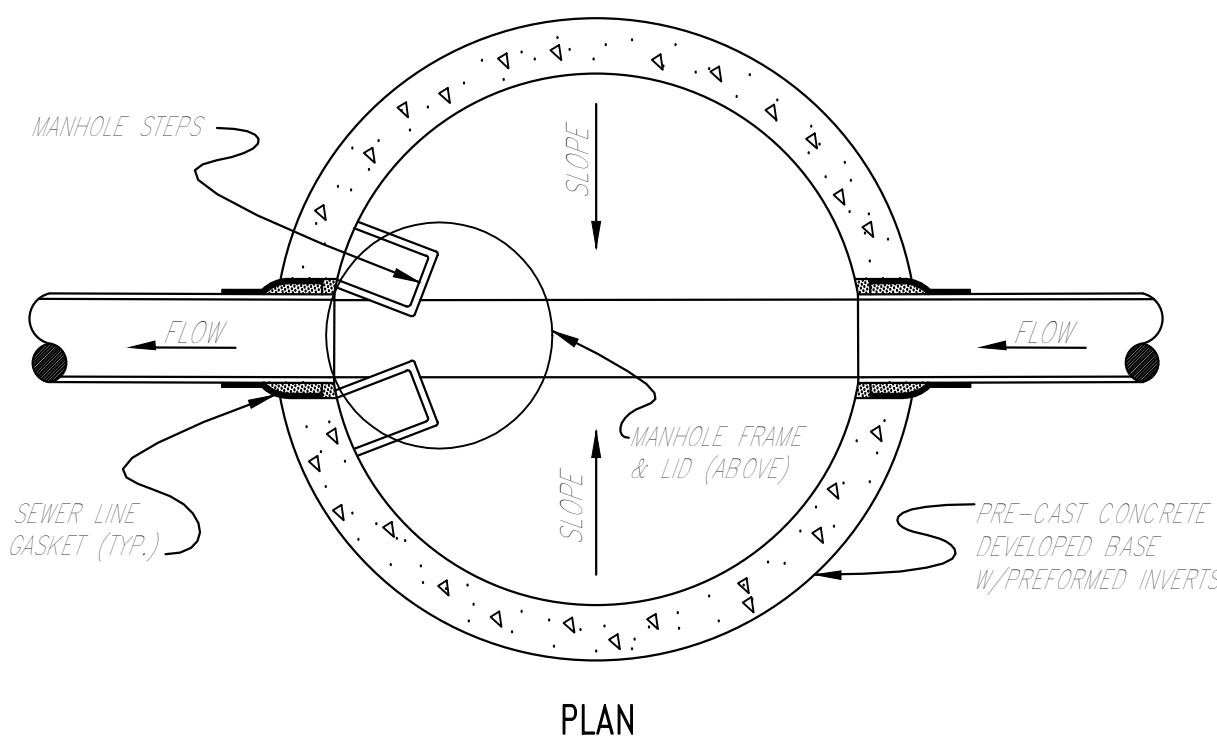
TAKE-UP CLAMP: BAND, SADDLE AND HOUSING MADE OF TYPE 302 STAINLESS STEEL  
BREEZE CLAMP, SCREW MADE OF TYPE 305 STAINLESS STEEL.  
BREEZE STAINLESS STEEL CLAMPS MEET ASTM C-923 REQUIREMENTS.

GASKET MANUFACTURED BY PRESS SEAL GASKET CO.



FORCE MAIN/MANHOLE TIE-IN

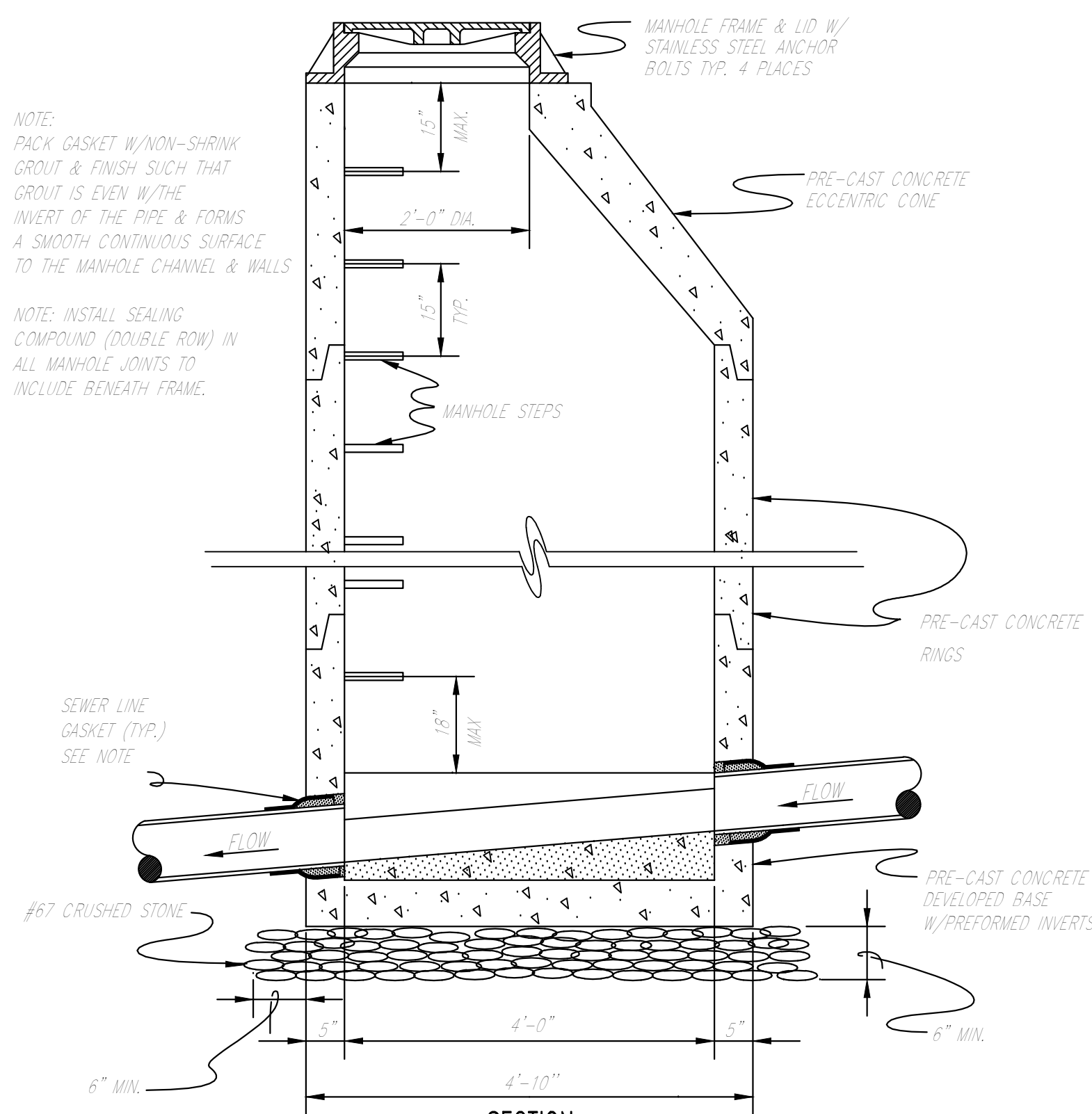
N.T.S.



PLAN

NOTE: PACK GASKET W/NON-SHRINK GROUT & FINISH SUCH THAT GROUT IS EVEN W/THE INVERT OF THE PIPE & FORMS A SMOOTH CONTINUOUS SURFACE TO THE MANHOLE CHANNEL & WALLS

NOTE: INSTALL SEALING COMPOUND (DOUBLE ROW) IN ALL MANHOLE JOINTS TO INCLUDE BENEATH FRAME.



TYPICAL MANHOLE

N.T.S. (GC5-07)

